

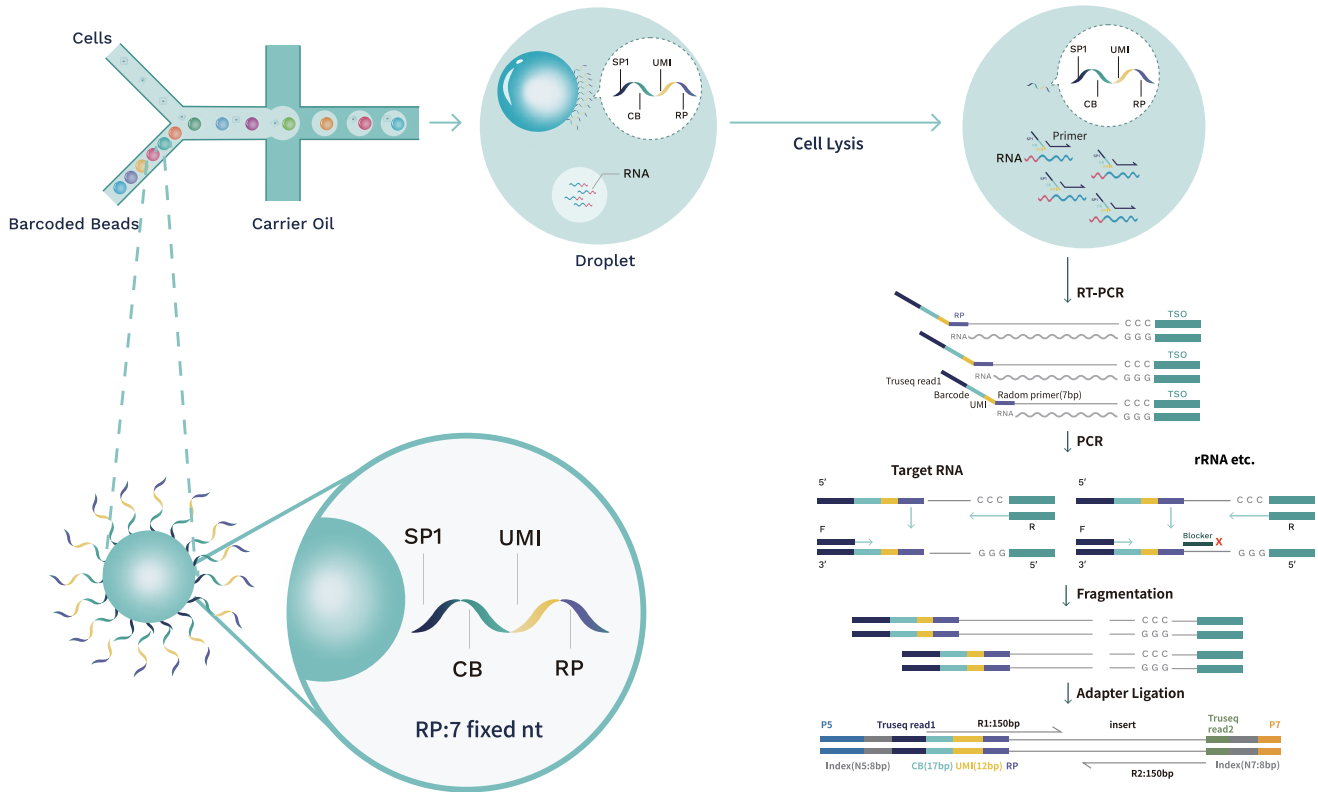
# SeekOne™ DD

## Single Cell Full-length RNA Sequence Transcriptome-seq (scFAST-seq)

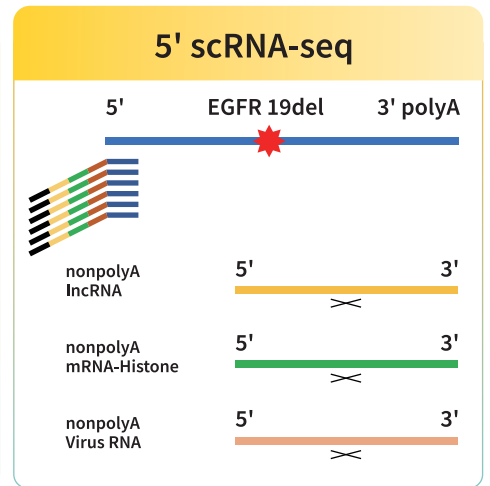
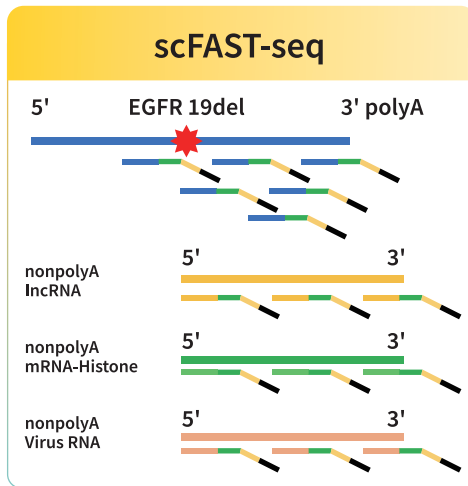
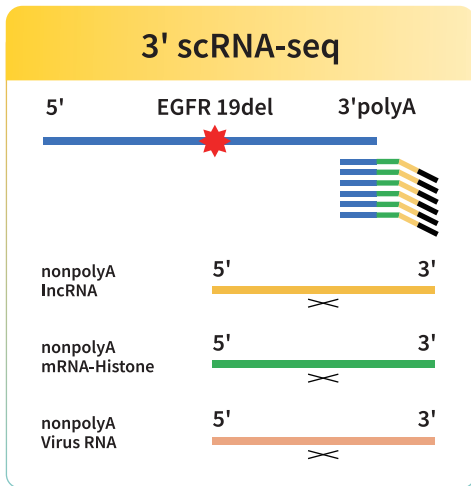
Beyond PolyA Limits, Expand Diversity of RNA



# How Does It Work?



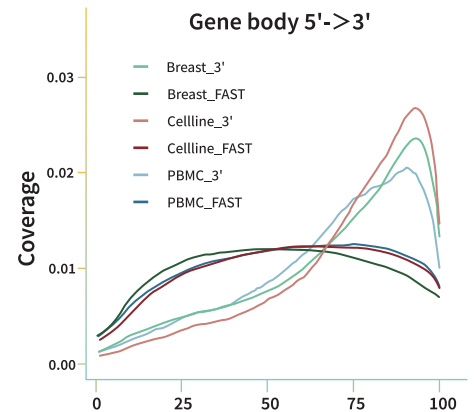
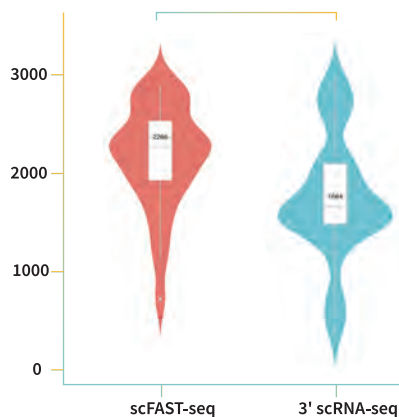
# Unbiased Discovery vs. End Capture



Unlock Non-polyA Tail Transcriptome

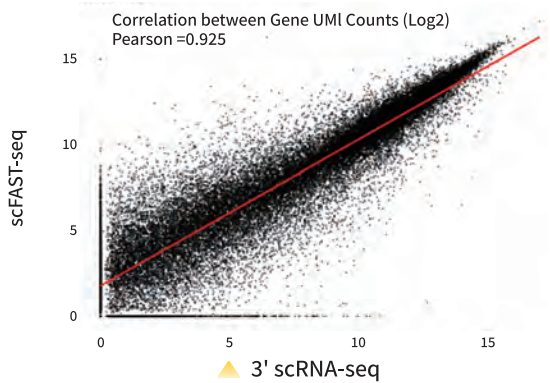
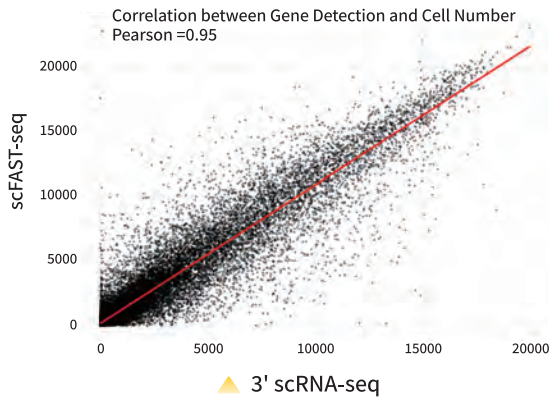
Discover Mutations at Single-Cell Level

Superior for Nuclei Samples

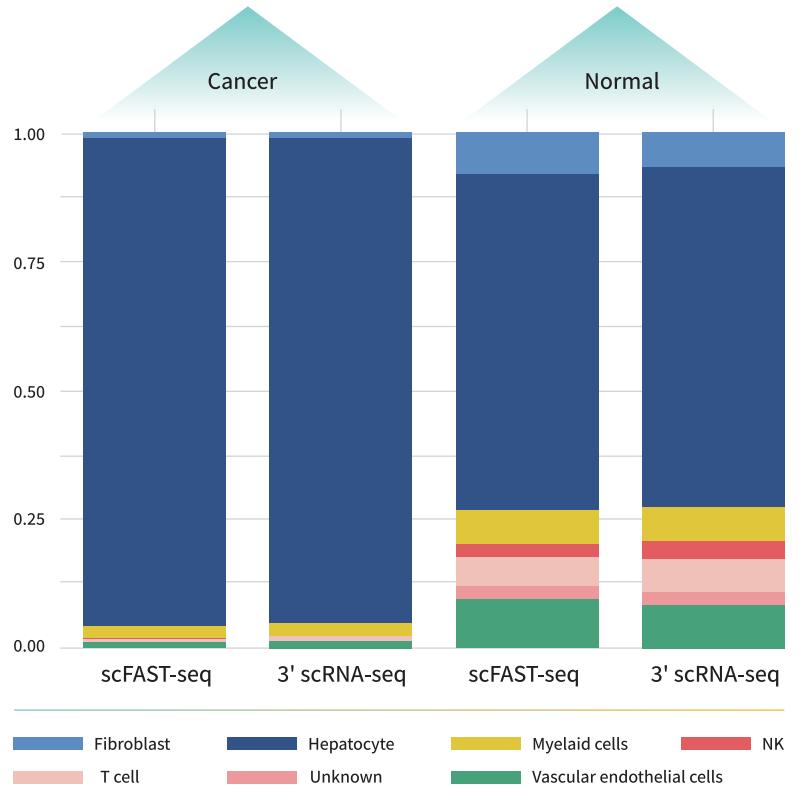


# Why Better Than 3' scRNA-seq?

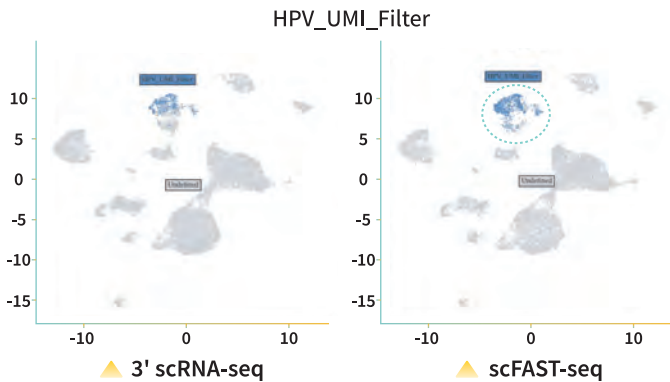
## Highly Consistent QC Outcomes



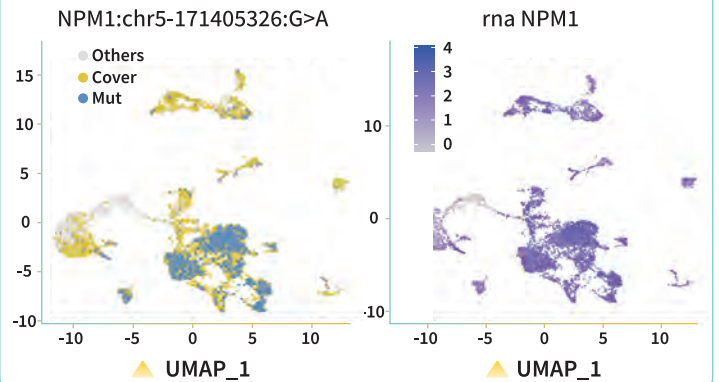
## Highly Consistent Cell Annotation



## Enhanced Viral RNA Discovery



## Reveal RNA Mutations

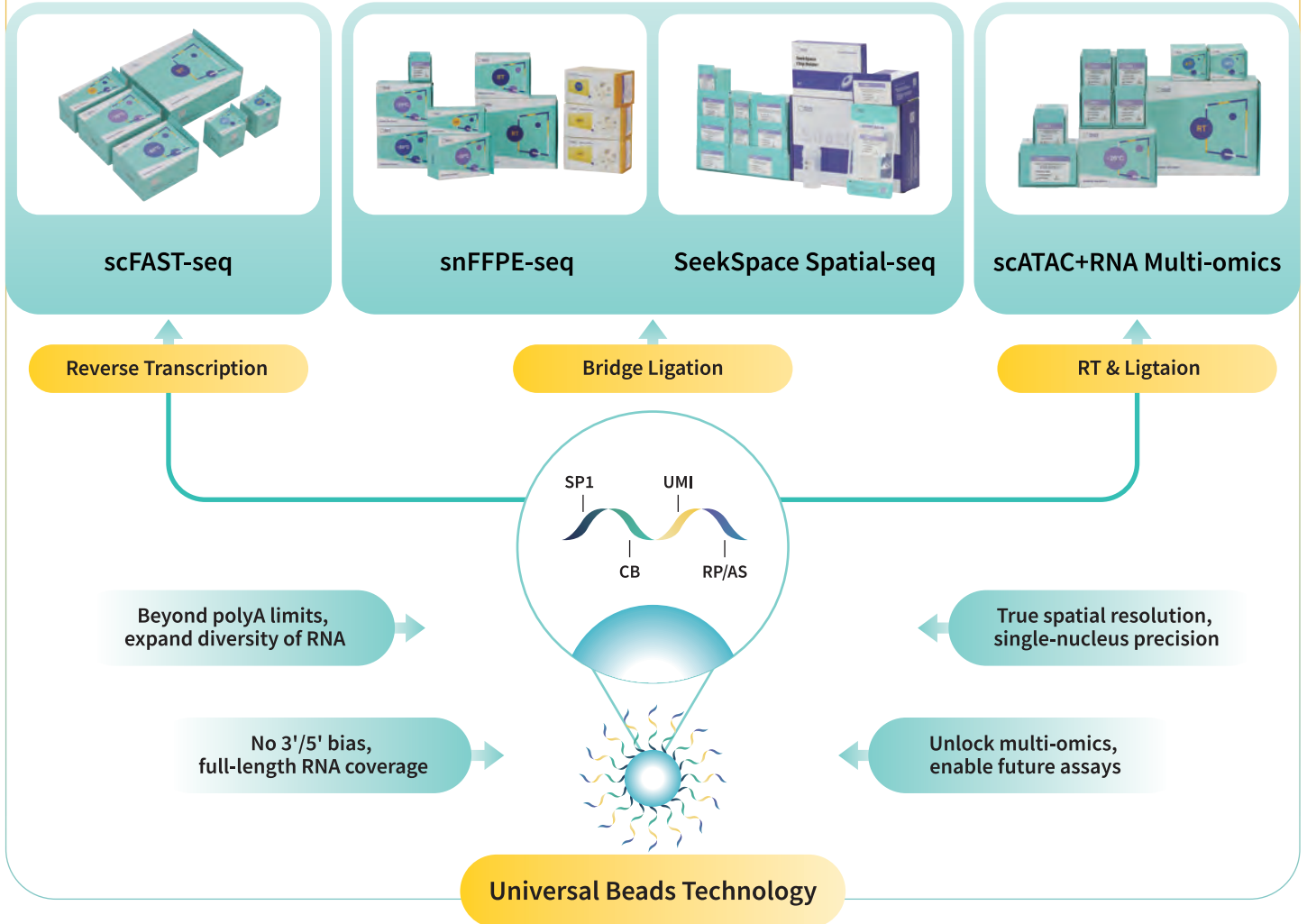


# Data Performance

Species	Tissue Type	Estimated_Number_of_Cells	Mean_Reads_per_Cell	Median_Genes_per_Cell	Number_of_Reads	Sequencing Saturation	Fraction_Reads_in_Cells	Total_Genes_Detected	Reads_Mapped_to_Genome
Human	PBMC	14,034	35,548	2,672	498,880,827	68.37%	95.33%	29,131	86.90%
Human	PBMC	9,337	37,680	2,799	351,820,514	71.75%	90.43%	28,449	91.19%
Human	PBMC	12,186	26,339	1,912	320,973,064	68.65%	91.06%	28,217	90.00%
Human	Ovarian Cancer	11,989	33,842	2,940	405,738,101	52.40%	92.12%	31,968	87.71%
Human	Liver Cancer	14,283	26,565	2,815	379,439,865	52.87%	94.44%	32,282	90.15%
Human	Lung Cancer	14,835	22,591	2,401	335,148,593	52.95%	89.90%	31,906	90.66%
Human	Placental Villus	10,034	34,160	2,453	342,763,071	51.31%	92.02%	31,621	88.87%
Mouse	Liver	10,767	33,622	3,333	362,011,570	47.92%	94.28%	25,373	88.21%
Macaque	Brain	13,919	27,057	2,489	376,614,910	44.44%	95.07%	26,790	85.45%

# The Magic of Universal Beads

One Bead, Multiple Uses: Infinite Possibilities



## Order Information

Product	Specifications	Product code
SeekOne™ DD Single Cell Full-length RNA Sequence Transcriptome-seq Kit	8 tests/Kit	K00801-08
SeekOne™ Digital Droplet System	1 unit	M001A



## How to Get in Touch?

E-mail: [info@seekgene.com](mailto:info@seekgene.com)

Web: [www.seekgene.com](http://www.seekgene.com)