

# CLONING PLATFORM

Automation for single-cell  
cloning with verification of  
monoclonality in a compact  
system

iotaSciences

**Accelerate your cell-line development  
projects with streamlined and  
powerful automation**



**GENE EDITING**



**IPSCS**

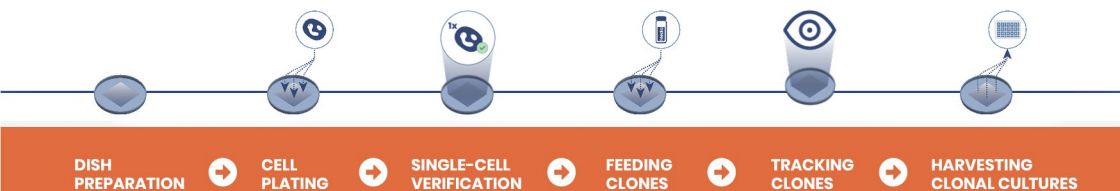


**CELL-LINE DEVELOPMENT**



**REPORTER CELL LINES**

# Automate your complete workflow



Increased throughput

Reproducible results



**isoHub**



**isoCell**

Reduced hands-on time



Scalable platform



**Streamlined and accessible automation**

Consistent workflows



# Efficient cloning with easy verification of monoclonality

## EASILY VERIFIABLE MONOCLONALITY

### GRIDs - optically clear chambers with <1 $\mu\text{L}$

Single cells are plated with the isoCell onto a GRID, which consists of 256 chambers.

The chambers' optical clarity and small size empowers users to verify monoconality and track outgrowing clones seamlessly with the isoHub.



### Image of chamber

(a) Optically clear chambers enable users to identify single cells (b) immediately after plating using a 4x objective - no labelling required.

### Features

### GRID-chambers

Physically separated cell environments



Scalable



One-step surface coating



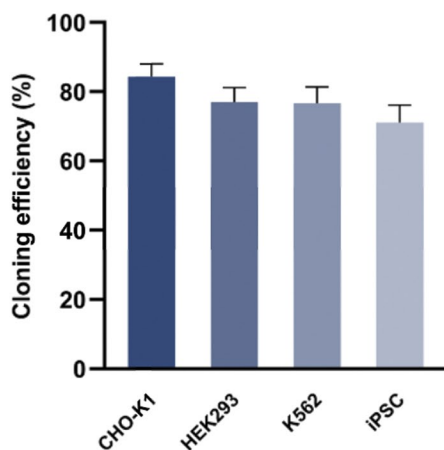
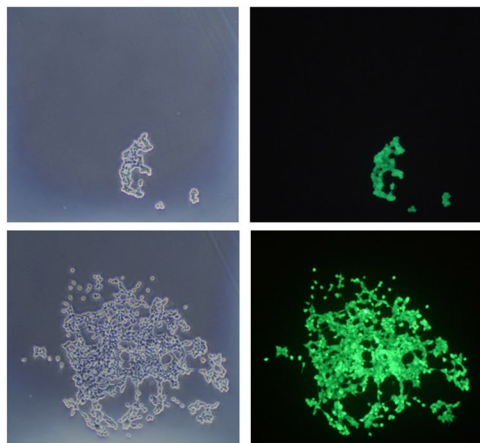
Single cells visible at edges



Single cells visible directly after plating



Low reagent consumption



Track your clones in brightfield and fluorescent mode

# CONSUMABLES

## isoCell cloning kit

Consumable packs (FC40<sup>STAR</sup> + plastics)  
suitable for 18 rounds of cloning.



# SUPPORT

## Helping you succeed

Ensure your success with  
technical support from our  
experts in single-cell  
cloning.



# CONTACT US

## Have any questions?

**+44 1865 309630**

**info@iotasciences.com**

**www.iotasciences.com**

### **iotaSciences**

Begbroke Science Park  
Begbroke Hill  
Begbroke  
Oxford  
OX5 1PF



**PROTEIGENE**

Tel: 02.32.64.45.45 • Fax: 02.32.64.30.72  
Email: info@proteigene.com • www.proteigene.com

**iotaSciences**